

RAIL

High performance, friction management solutions

Innovating for tomorrow

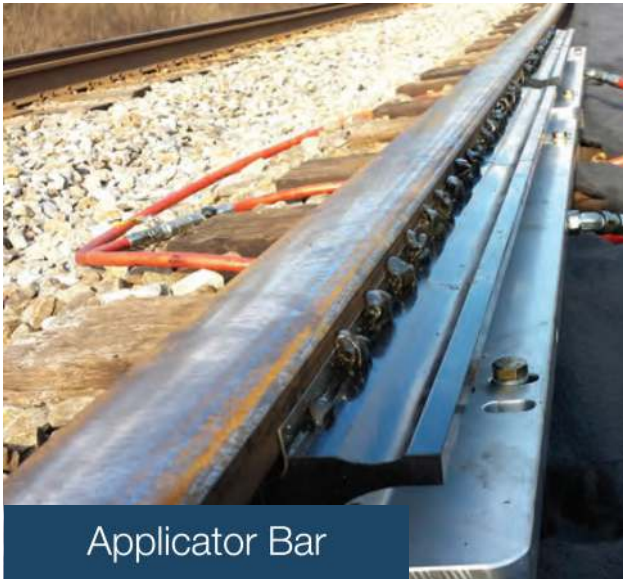
t. +44 (0)151 709 2902
w. www.rsclare.co.uk
e. info@rsclare.co.uk

GaugeShield®

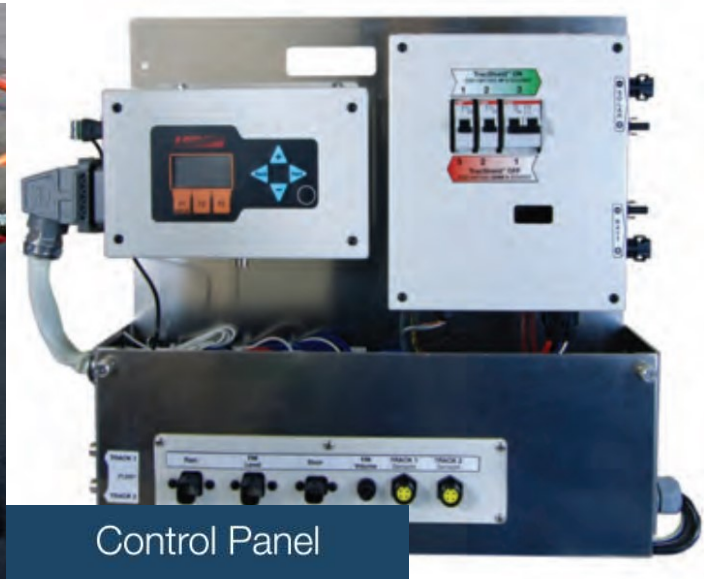
Trackside Lubricator for Gauge Face Lubrication

GaugeShield® is an intelligent trackside system that senses the passing of train wheels over the GaugeShield's durable sensors and automatically dispenses a controlled quantity of grease to the gauge face of the rail.

Designed for precise grease application, easy maintenance and functionality, the **GaugeShield®** has a customisable pump and control system with higher resolution that outputs less grease than other gauge face applicators, resulting in reduced consumption and operating costs. The lubricator requires very little maintenance and is equipped with sensors to capture the condition of the system at all times.



Applicator Bar



Control Panel

GaugeShield® Trackside Lubricator Features:

- Easy maintenance dispensing bar
- Removable grease tank
- Bottom cone feed to reduce cavitation
- Single/dual output gear pump with fewer moving parts
- Flighting attachment to pump that assists grease pull to reduce cavitation
- One control box for two tracks
- Reliable/repeatable output at all temperatures
- Remote monitor capable
- Weight-based grease management system
- Optional storage box for stowing bars, hoses and other equipment
- Plug-and-play remote performance monitoring system

GaugeShield® Trackside Lubricator Benefits:

- Increases rail life
- Reducing curve forces
- Reduces wheel flange noise
- Reduces fuel consumption
- Reduces conditions that can cause derailments
- Available in 2 sizes to best fit your needs

Reliable Service and Support:

As part of our full service offering we can provide you with:

- An initial survey
- Complete installation
- Commission
- Training

LORAM



RS Clare & Co Ltd

Innovation since 1748